

Lee County Emergency Management Agency

Lee County EMA Activity Report for July 2024

The traffic control support trailer was enhanced by adding a steel tube frame to the front to haul additional type II barricades. A design was developed, materials purchased at a cost of \$103.84 and fabricated by a local certified welder at no cost. The trailer is quickly deployable to any type of event requiring traffic control.

Lee County EMA assisted the City of Dixon with operations during the Dixon Petunia Festival on July 3, 4, 5, 6, and July 7. Light towers, camera system and the Critical Incident Command Trailer were utilized in support of law enforcement. The festival was successful, without major incident. During recovery of the EMA light tower, due to weathered and old tires, a tire failed. Both tires were replaced on the light tower at a cost of \$231.54.

Background checks were completed on recent applications to the Lee County Volunteer Corps (LCVC) Ground Search and Rescue (GSAR) team. Twenty-five new members were accepted. The LCVC GSAR Team conducted its monthly training at Lowell Park on Wednesday July 10. During the training, the Lee County EMA UAS was requested for a subject who ran from Law Enforcement. The drone was flown, the subject was located, and location monitored and shared with Lee County Sheriff's deputies. The subject was taken into custody.

The EOC was opened for four days to a Level 2 to monitor the severe weather predicted by the National Weather Service Chicago Office. A line of thunderstorms moved across northern Illinois during the night of Sunday, July 14 and Monday July 15 producing swaths of wind damage, several embedded tornadoes, and torrential rainfall leading to flash flooding in areas. The level of the Rock River was monitored, and river forecasts were sent to those critical partners who would be affected by flooding and the forecast was posted on the EMA Facebook for public awareness. Daily SitReps were forwarded to primary agencies.

The National Weather Service recorded over thirty-five tornados in northern Illinois, a new record for the two days. A Local weather station in eastern Ogle County recorded winds of 101 MPH. Lee County was spared severe damage. Reports of damage within the County amounted to trees and wires down. No structural damage was reported. Winds in Lee County did not exceed 45 MPH. Approximately 600 ComEd customers were without power. Some power outages lasted for 4 and 5 days.

309 S Galena Avenue, Suite 325, Dixon, IL 61021-3090

Office: 815-284-3365, Fax: 815-284-3367, 24/7: 815-284-3361

Email – ema@countyoflee.org

Lee County Emergency Management Agency

Lee County EMA was requested in the early hours of July 16th to assist in the evacuation and relocation of residents of the Polo Rehab Center due to a lightning strike and subsequent smoke in the building. Nineteen residents were evacuated and moved to Polo High School without issue. An After-Action meeting was held, and the staff of the facility were pleased with the help provided by assisting agencies. Assisting in events such as this provides valuable experience for similar events if they occur in Lee County.

The EMA Drone was requested for a lost 4-year-old on the outskirts of Dixon. Before arrival, the subject was located outside on a day with temperatures in the 90s and high humidity.

The EM office received a question on what residents should do if they live in a mobile home park during severe weather. Information was provided and subsequently posted on the Lee County Facebook page.

It was discussed with the Facilities Director and Chief of Court Security on the disposition of EM items stored in the 2nd Floor expansion space. Items will be inventoried, logged, disposed of, or stored in an agreed location. Files from previous grants and other documents that are required to be retained were moved from a room where the Treasurer Office has items stored on the second floor into a small closet in the basement.

A switch failed in the UTV. The replacement was ordered on-line and replaced without using a vendor/mechanic.

The Director attended the Regional IEMA meeting in Kewanee. An exercise was developed for later this year in preparation for task book certification as required by FEMA.

The Lee County EM Office in combination with the Lee County GIS Office is working on an app powered by ERSI Survey 1-2-3 to assist in reporting of damage due to severe weather. The program will have a Windshield Survey for first responders to report during, and immediately after severe weather. A Self-Reporting damage assessment survey will be linked to the Lee County Sheriff's Office App and Lee County EMA Facebook Page for citizens to self-report. Both initial surveys will assist in determining if a Preliminary Damage Assessment (PDA) is needed. The PDA data is required to submit a Disaster Declaration Request. The PDA requires staff to go door to door and interview home and business owners on the type and severity of damage to their property including insurance coverage. The data is compiled in a format required by the State, substantiating Lee County meets the uninsured level of damage to apply for aid.

309 S Galena Avenue, Suite 325, Dixon, IL 61021-3090

Office: 815-284-3365, Fax: 815-284-3367, 24/7: 815-284-3361

Email – ema@countyoflee.org

Lee County Emergency Management Agency

A letter to State and Federal Elected Officials representing Lee County was sent encouraging them to restore FEMA funds to at least FY23 levels. Not only is the budget being cut at the Federal level, but Illinois plans to change the formula on how the Federal Funds are allocated to locals (County EM). These actions will have a direct impact on Lee County.

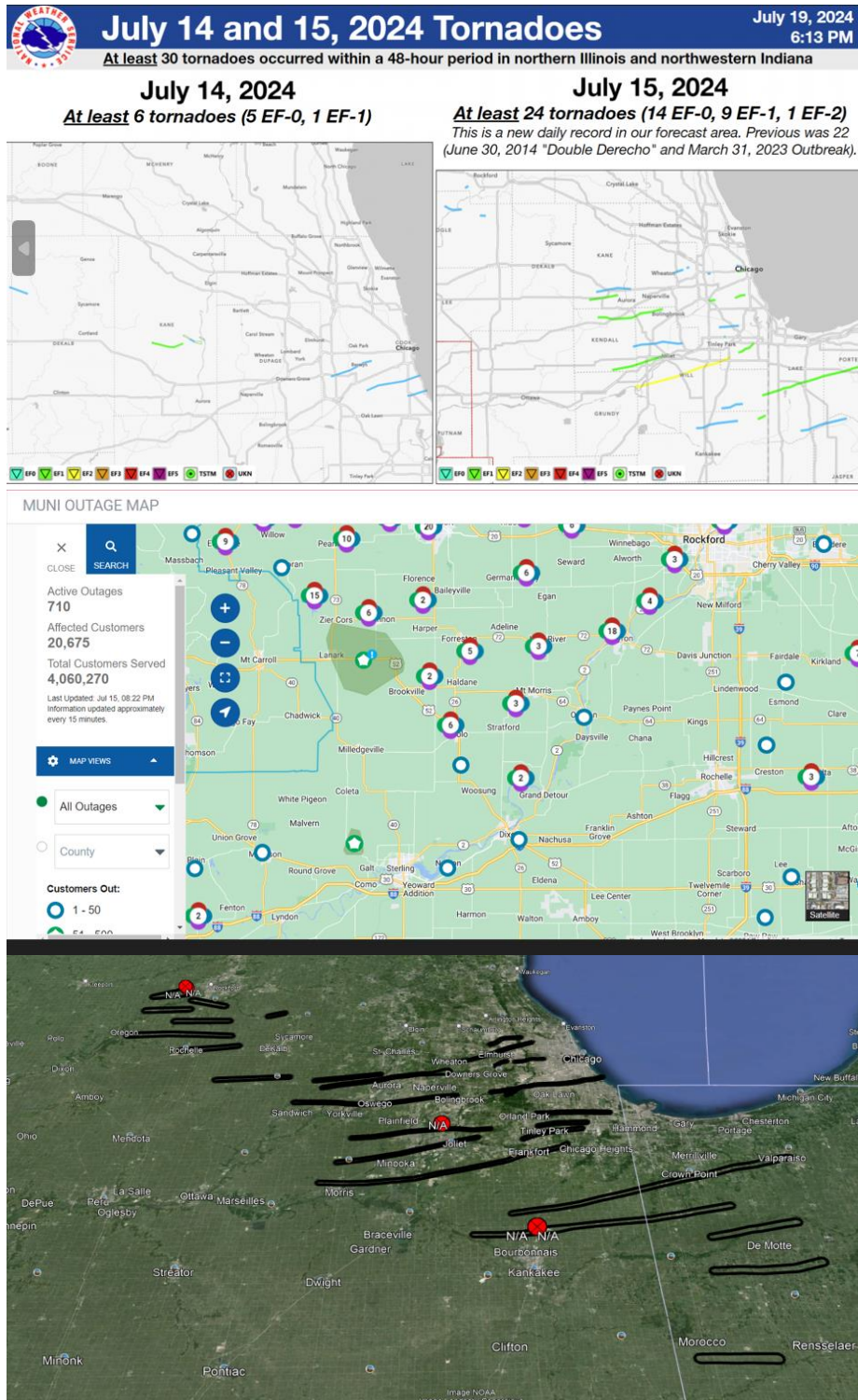
Attached are screenshots of the severe weather and impacts on Lee County and surrounding areas.

309 S Galena Avenue, Suite 325, Dixon, IL 61021-3090

Office: 815-284-3365, Fax: 815-284-3367, 24/7: 815-284-3361

Email – ema@countyoflee.org

Lee County Emergency Management Agency



309 S Galena Avenue, Suite 325, Dixon, IL 61021-3090

Office: 815-284-3365, Fax: 815-284-3367, 24/7: 815-284-3361

Email – ema@countyoflee.org